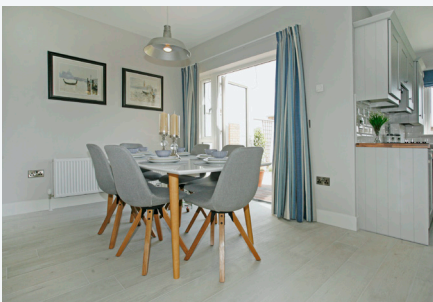


# The Valentia

1,376 ft<sup>2</sup>, 127.8 m<sup>2</sup>

CAMOGEPARK  
by Clancy Homes



## The Valentia

4 bed detached / semi-detached

Our unique detached Valentia is an elegant four bed home which offers accommodation over two floors. This is our flagship home offering exceptional living space and 4 large bedrooms. This home is available as either detached or semi-detached.

## Camoge Park, by Clancy Homes

An exciting and exclusive new development that combines countryside living with real contemporary style.



License Number 002030

061 413522 | 087 202 6886

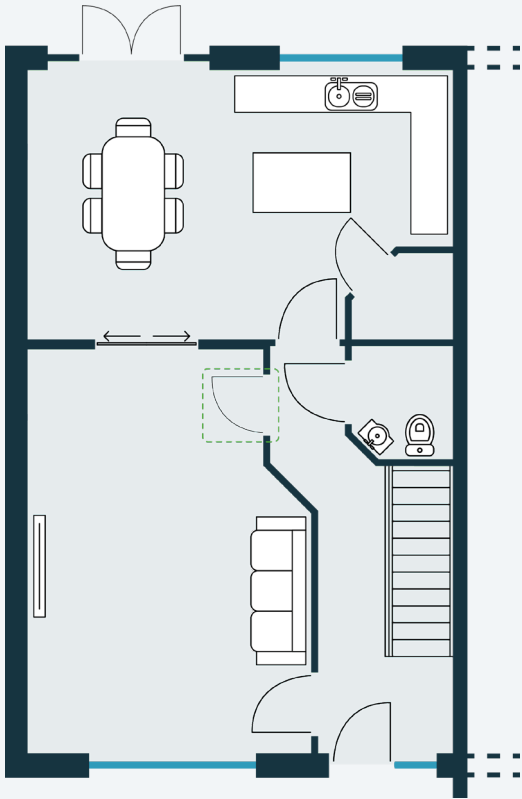
newhomes@gvm.ie

25-26 Glentworth St., Limerick



# The Valentia

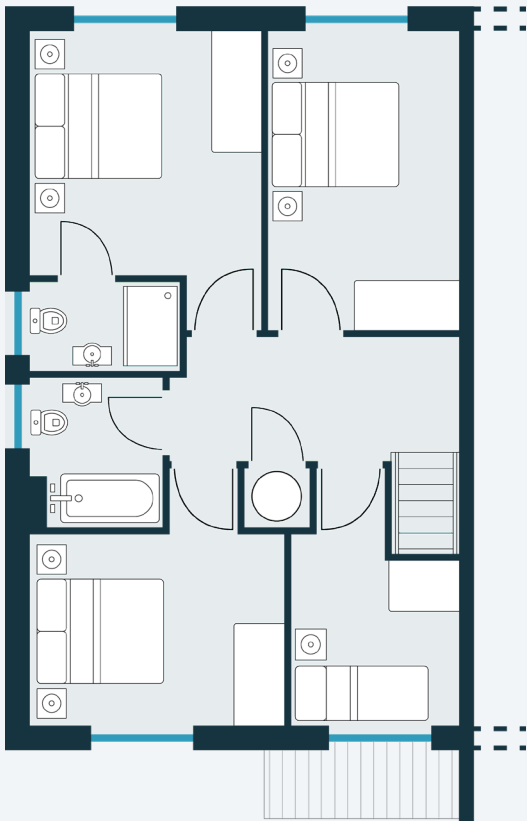
1,376 ft<sup>2</sup>, 127.8 m<sup>2</sup>



 = Alternative door position

## Ground Floor

Room	Metric (m)	Imperial (ft)
Living Room	4.2 x 6	13' 10" x 19' 8"
Kitchen	4.7 x 4	15' 6" x 13' 1"
Utility	1.5 x 1.3	4' 11" x 4' 2"
WC	1.5 x 1.7	4' 11" x 5' 6"



## First Floor

Room	Metric (m)	Imperial (ft)
Main Bedroom	3.4 x 3.6	11' 2" x 11' 8"
En Suite	2.2 x 1.2	7' 2" x 3' 11"
Bed 2	2.8 x 4.4	9' 2" x 14' 4"
Bed 3	3.7 x 2.8	12' 4" x 9' 2"
Bed 4/Office	2.5 x 2.8	8' 1" x 9' 2"
Bathroom	1.7 x 2.2	5' 7" x 7' 2"