

# The Aran

1,075 ft<sup>2</sup>, 99.9 m<sup>2</sup>

CAMOGEPARK  
by Clancy Homes



## The Aran 3 bed semi-detached

Offering spacious accommodation over two floors, this stylish three-bedroom home is available as a semi-detached or terraced property. It is an exceptionally well-designed home. Upstairs its well-proportioned bedrooms create a spacious interior. This is an excellent family home.

## Camoge Park, by Clancy Homes

An exciting and exclusive new development that combines countryside living with real contemporary style.



License Number 002030

☎ 061 413522 | 087 202 6886

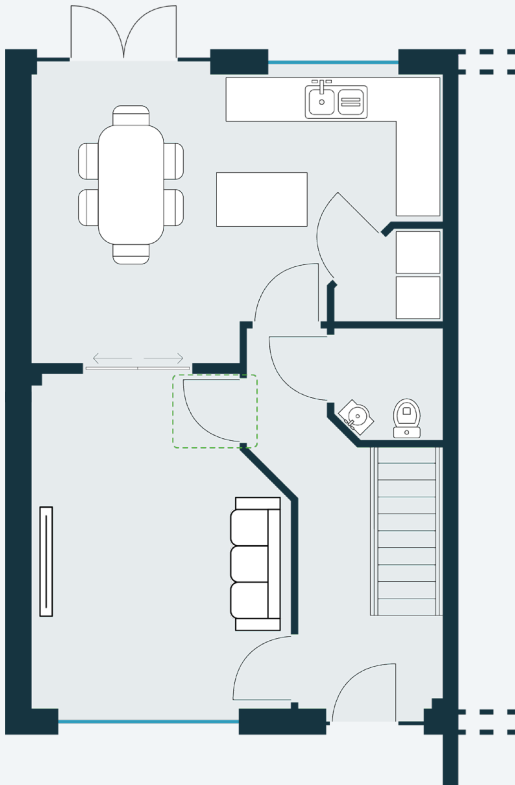
✉ newhomes@gvm.ie

📍 25-26 Glentworth St., Limerick



# The Aran

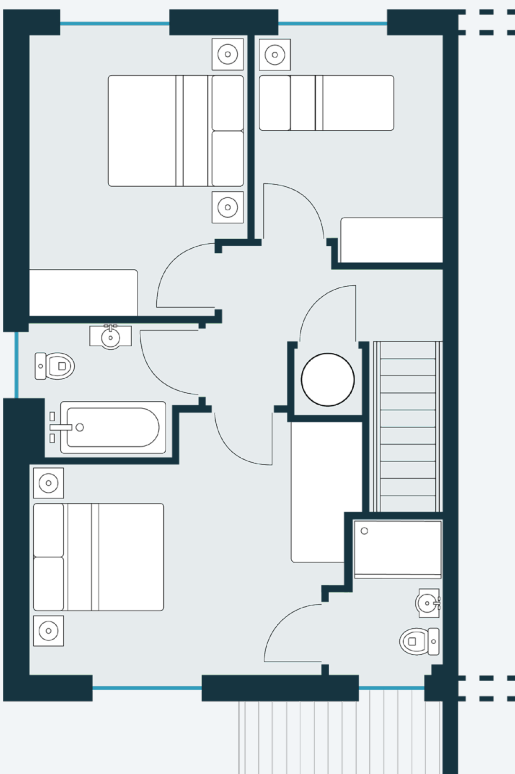
1,075 ft<sup>2</sup>, 99.9 m<sup>2</sup>



 = Alternative door position

## Ground Floor

Room	Metric (m)	Imperial (ft)
Living Room	3.6 x 4.7	11' 10" x 15' 7"
Kitchen	4.1 x 3.9	13' 5" x 12' 10"
Utility	1.5 x 1.3	4' 11" x 4' 2"
WC	1.5 x 1.7	4' 11" x 5' 5"



## First Floor

Room	Metric (m)	Imperial (ft)
Main Bedroom	4.7 x 3.5	15' 4" x 11' 6"
En Suite	1.2 x 2.1	3' 10" x 7'
Bed 2	3 x 3.9	10' x 12' 11"
Bed 3	2.6 x 3.1	8' 5" x 10' 2"
Bathroom	2.3 x 1.8	7' 7" x 6'