

The Achill

1,246 ft², 115.8 m²

CAMOGEPARK
by Clancy Homes



The Achill

3 bed semi-detached

Offering spacious accommodation over two floors, the Achill, our larger three bed home is available as a semi-detached or terraced property. Features such as a utility room downstairs and a walk-in wardrobe off the main bedroom make this house an excellent family home. Great care and attention to design and detail in this home ensures an excellent use of space especially for those now working from home.

Camoge Park, by Clancy Homes

An exciting and exclusive new development that combines countryside living with real contemporary style.



License Number 002030

061 413522 | 087 202 6886

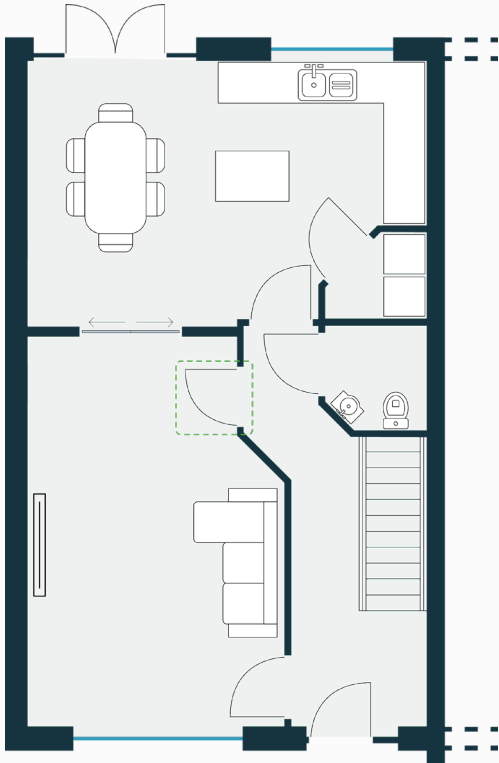
newhomes@gvm.ie

25-26 Glentworth St., Limerick



The Achill

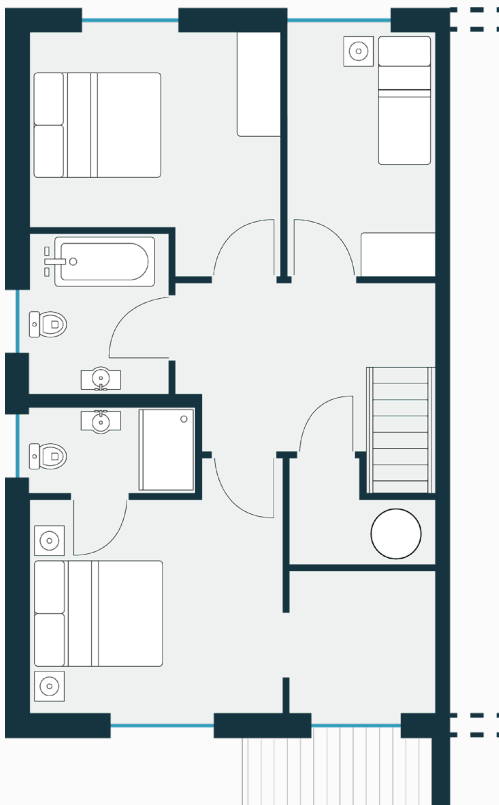
1,246 ft², 115.8 m²



 = Alternative door position

Ground Floor

Room	Metric (m)	Imperial (ft)
Living Room	3.8 x 5.5	12' 5" x 18'
Kitchen	4.3 x 4.2	14' 1" x 13' 10"
Utility	1.5 x 1.3	4' 11" x 4' 2"
WC	1.5 x 1.7	4' 11" x 5' 5"



First Floor

Room	Metric (m)	Imperial (ft)
Main Bedroom	3.7 x 3.1	12' 0" x 10' 1"
En Suite	2.4 x 1.2	7' 11" x 4'
Walk-in Wardrobe	2.1 x 2.1	7' x 6' 8"
Bed 2	3.6 x 2.8	11' 11" x 9' 2"
Bed 3	2.2 x 3.6	7' 1" x 11' 11"
Bathroom	2 x 2.3	6' 5" x 7' 7"